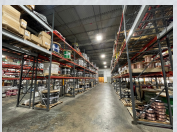
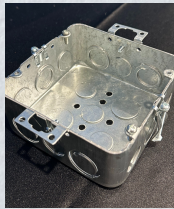
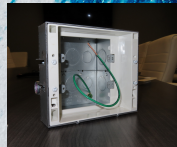
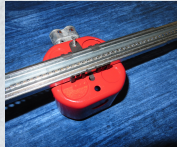
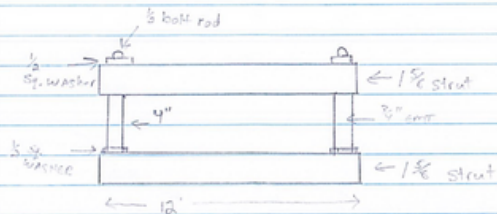


# Case Studies

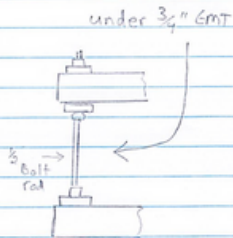


where it all began...

MC CABLE RACK 8/16/19  
125 pcs



- 2-12" 1 1/2" struts
- 2-8" 1/2" bolt rods
- 6- 1/2" sq. washers
- 2-4" 3/4" emt
- 2- 1/2" spring nuts
- 6- 1/2" fenders
- 6- 1/2" nuts



MC CABLE RACK

8/16/2019

# ***CASE STUDY***

## **TEMP POWER DROP CORD**

### **BUILD TYPE:**

15' TEMP POWER DROP CORD

### **COMPONENTS LIST:**

- 12/3 SJ00W CORD - CUT 15' LENGTHS
- 4" SQ 2 1/8"D BOX
- 2G RAISED DUPLEX COVER
- NM CORD CONNECTOR - ARLINGTON LPCG50
- 2-20A TR DUPLEX RECEPTACLES



# CASE STUDY

*Roof Top Support Fully Assembled*

**Build:**

**48" wide roof top support – Support set at 36" off ground**

**Components:**

- 1 5/8 x 1 5/8 slotted strut
- Extra heavy duty support blocks – 2,000 lbs rated
- Stainless Steel Hardware



*Custom Solutions Available*

# Case Study

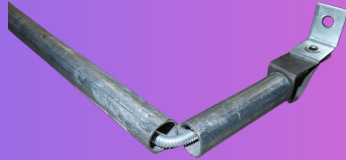
## MC TRAPEZE ROLLERS

### BUILD:

Prebuilt Trapeze to pull MC

### COMPONENTS:

- Rod Hangers - B-Line BH4-H7
- 1/4" All thread -B-Line ATR 1/4
- 1/2" EMT



# CASE STUDY

## CUSTOM ASSEMBLED J-HOOK TREE

### BUILD:

MULTI-TIER CABLE HOOK TREE

### COMPONENTS:

- STRUT
- J-HOOKS



# CASE STUDY

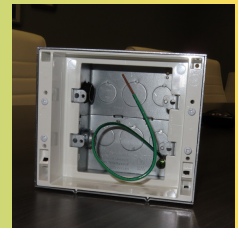
## PRE-ASSEMBLED TV BOX

### DESCRIPTION:

2G TV BOX - WITH 12IN PIG TAIL, SINGLE MC CONNECTOR, SINGLE SNAP IN NM BUSHING

### COMPONENTS:

- TVBSS05
- 12" PIG TAIL - METALLICS PT4012
- SINGLE MC CONNECTOR - ARLINGTON 40AST
- SNAP IN BUSHING - ARLINGTON 4400



# Case Study

## Bulk Pack LED Flat Panels

### Description:

Staged, Stored and delivered. Removed from all manufacturer packaging. Stacked on a 2'x4' rollable cart with reusable foam between each fixture. Strapped down with ratchet re-usable straps





# CASE STUDY

## Custom KO Enclosure

### Description:

18 - 1/2" KO drilled on 3 sides -  
Location decided by customer



# CASE STUDY

## Custom Assembly

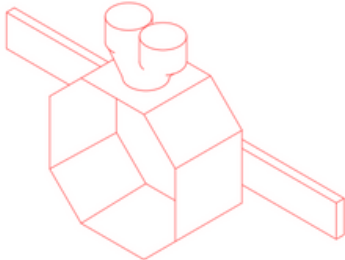
### Description:

Preassembled Fire Alarm Box

### Components:

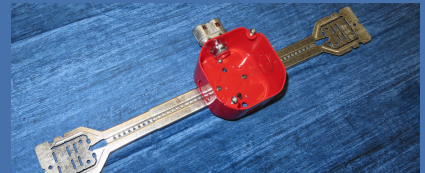
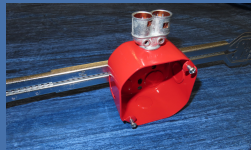
- 4" Square Red Octagon Box
- BB2-24T Eaton B-Line Spreader Bar Bracket
- BB2-TSC Eaton B-Line Box Clip for Spreader bar
- 4040AST Arlington Double MC Connector

E



	QTY
1. (MANUFACTURER) (CAT. NO.) RED 4IN OCTAGON BOX (2-1/8"D)	x 1
2. EATON B-LINE CAT. NO. BB2-16T & BB2TSC TELESCOPING BOX BRACKET & CLIP	x 1
3. ARLINGTON CAT. NO. 4040AST DOUBLE MC CONNECTOR	x 1

NOTE: SMOKE ALARMS IN & OUT WIRING  
(FROM 9.18.23)



# CASE STUDY

## STRUT CUTTING



### COMPONENTS:

- 10' AND 20' LENGTHS
- SLOTTED AND SOLID
- STANDARD SIZES 1 5/8", 7/8", 3" AND 1 5/8" BACK TO BACK
- GALVANIZED
- HOT DIPPED GALVANIZED
- STAINLESS STEEL
- GREEN
- YELLOW ZINC



# CASE STUDY

## Commissioning

### Description:

Includes Full Commissioning and Programming of complete site including changes to existing fixtures.

### Details:

- \$1250 Initial Day
- \$500 per day thereafter

### Preplanning Meeting:

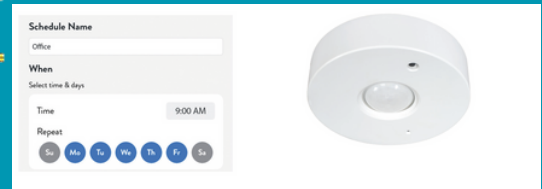
- Expectation of customer
- Fixture Heights



RAB Lightcloud Blue Products



American Lighting Spektrum+



RAB Lightcloud Products

# CASE STUDY

## HEAVY DUTY TRAPEZE ROLLER

Customized to your preferences

- **1 5/8" slotted strut**
- **1/2" All Thread**
- **B202 washer**
- **1/2" Nut**
- **3" EMT (bottom roller)**
- **1/2" EMT (side roller)**
- **1/2" Beam Clamp**

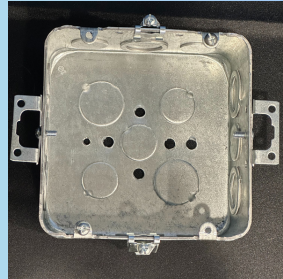


# CASE STUDY

Custom Old Work Box

Details

- 4 11/16" metal box - TP563
- Old work clip - TP651
- Old work mounting ear - TP901
- #8 - 32 x 3/8 screw - 2 pcs



# CUSTOM LENGTH EMT & RIGID PIPE



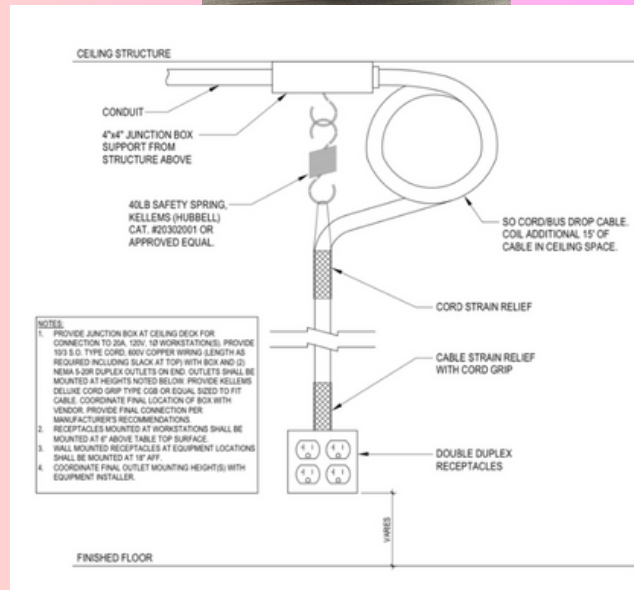
# CASE STUDY

## CUSTOM CORD DROPS

Item: 16 Duplex 50' Cord Drop

### Material List

Manufacturer	Part #	Description	Per Assembly
Priority Wire	10/3 SOOW Cord	.66 overall diameter	50
P&S	BOX52	Cord Grip	1
P&S	FCS2	Cord Drop Grip single eye	1
Eaton - Crouse Hinds	TP403	4 2 1/8" Metal Box	1
Eaton - Crouse Hinds	TP516	1g Duplex Receptacle	1
Eaton Wiring Devices	BR206Y	5-20R Duplex Rec	1
Eaton Wiring Devices	B2001	Safety Spring	1
Pollart Services	Cord Assembly	Per Drawings	1





# Case Study

## Custom Cut All Thread

### Description:

- Custom-Cut All thread to any size
- Available in:
  - 1/4", 3/8", and 1/2"
  - 6 FT, 10 FT, and 12 FT



# Storage Capabilities

Skid Size	Receive In*	Pick Up - Out	Monthly Fee
Up to 4x4	\$39.00	\$12.00	\$30.00
Larger than 4x4	\$78.00	\$17.00	\$56.00

\*Contractor based pricing. Please inquire for distributor pricing.\*

\*Covers all storage fees until 1st monthly invoice

## DETAILS

### Delivery

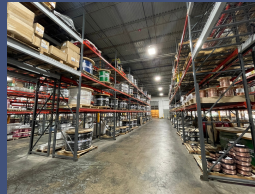
- Delivery - \$75.00 per skid within a 30 mile radius of Pollart HQ
- Lift Gate - \$25.00 Surcharge

### Invoicing

- Initial Invoice sent upon receipt of material to include received-in fee
- Monthly invoice is on the 1st of every month
- Final Invoice = Out Fee + Shipping Costs if apply

### Staging & Inventory

- Pricing negotiated based upon scope of work
- Breakdown of skids and count material
- Stage per floor and room or what project requires



# CASE STUDY

# PARALLEL CAT 6

**BUILD:**

17 - 330' LEGS PARALLELED ON ONE REEL



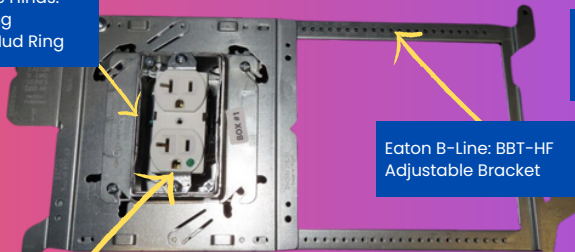
# Case Study

# CUSTOM ASSEMBLY

## Material List

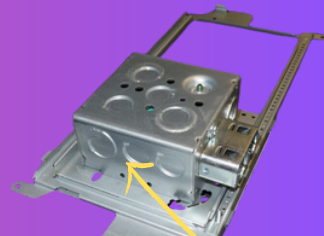
- **Eaton Crouse Hinds** - TP4Q10PF - 4 2 1/8" Metal Box w/ Quick Lok Connector and Ground Tail
- **Eaton B-Line** - BBT-HF - Adjustable Bracket
- **Eaton B-Line** - BBA - Mounting Bracket
- **Eaton Wiring Devices** - 8300W - 20a Hospital Grade - 6" lead on every device
- **Wago Connectors** - 3 5 port Wagos per assembly
- **Eaton B-Line** - BPRI - Metal Protective Cover
- **Eaton Crouse Hinds** - AMR1 - 1-gang Adjustable Mud Ring

Eaton Crouse Hinds:  
AMR1 - 1-gang  
Adjustable Mud Ring



Eaton B-Line: BBT-HF  
Adjustable Bracket

Eaton Wiring Devices: 8300W - 20A  
Hospital Grade - 6" lead on every device



Eaton Crouse-Hinds: TP4Q10PF - 4 2 1/8"  
Metal Box w/ Quick Lok Connector and  
Ground Tail

**NOT SHOWN:**  
**Wago Connectors - 3 5port  
Wagos per assembly**

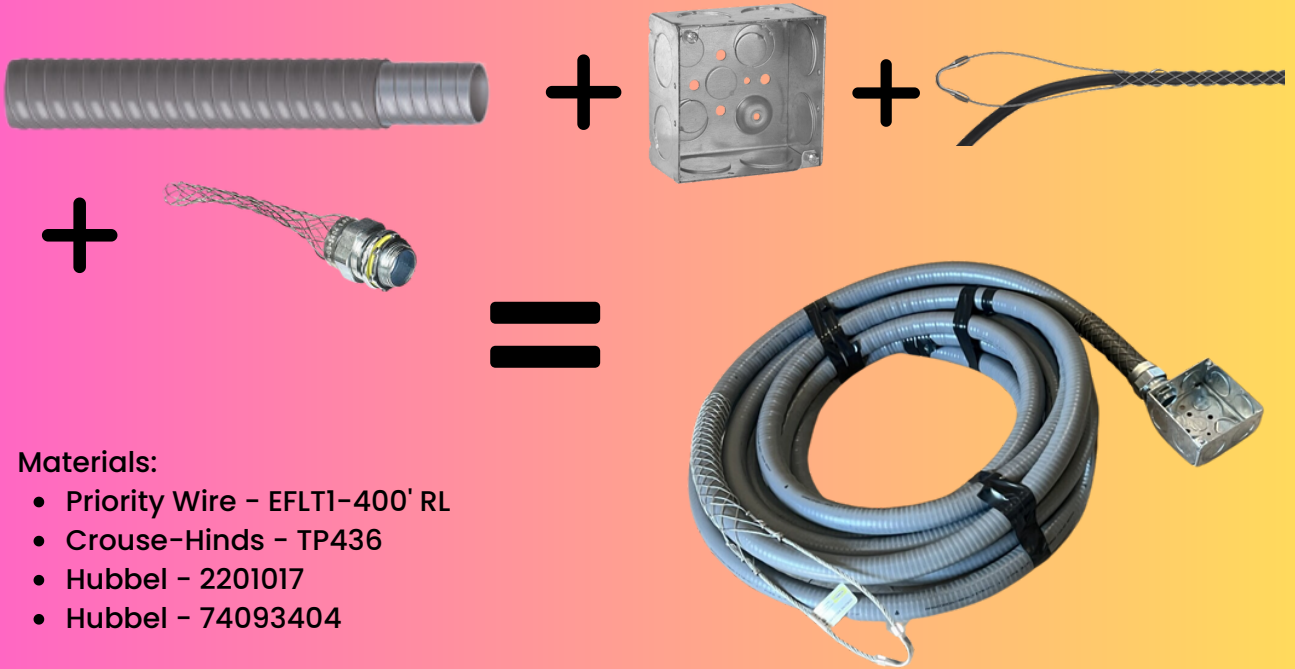


Eaton B-Line: BBA -  
Mounting Bracket

Eaton B-Line: BPRI -  
Metal Protective Cover

# Case Study

## LIQUID TIGHT DATA DROP



### Materials:

- Priority Wire - EFLT1-400' RL
- Crouse-Hinds - TP436
- Hubbel - 2201017
- Hubbel - 74093404

# CASE STUDY

# BLACK PANEL BACK BOARD

- 2x4 Black Panel
- 2x4 Unpainted Panel
- Custom Options available
- Skid Quantity: 25 pcs

